

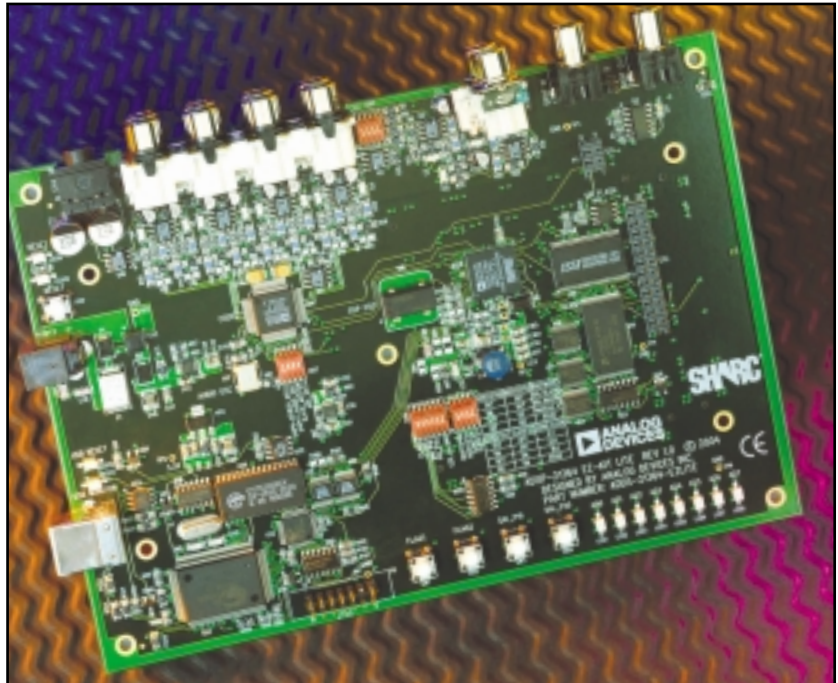
# ADSP-21364 EZ-KIT Lite Evaluation Kit for the ADSP-2136X SHARC Processor Family

## Key Features

- ADSP-21364 SHARC Processor
- 1 M x 8-bit FLASH memory
- 512 K x 8-bit SRAM
- 512 Kbit SPI® FLASH memory
- AD1835 stereo, 96 kHz, 24-bit  $\Sigma\Delta$  codec
  - 4 x 2 RCA jack for four channels of stereo audio output
  - 1 x 2 RCA jack for one channel of stereo audio input
  - Headphone jack (connected to one of the stereo outputs)
- SPDIF In RCA jack
- SPDIF Out RCA jack
- USB-based debugger interface
- JTAG ICE 14-pin header
- Evaluation suite of VisualDSP++ development tools
- FLASH utility for downloading boot code to on-board FLASH memory
- Type A expansion interface with three connectors supporting parallel port, FLAG, SPI, and DAI interfaces
- 8 general-purpose LED
- 4 push buttons: two general-purpose input (connected to DAI), two IRQ (connected to flag pins)
- USB cable
- CE certified

## System Requirements

- Intel® Pentium® 166 MHz, or higher
- 32 MB RAM, minimum
- Microsoft® Windows® 98/2000/XP
- One available USB connector



## Overview

The ADSP-21364 EZ-KIT Lite™ provides developers with a cost-effective method for initial evaluation of the ADSP-21364 SHARC® Processor architecture via a USB-based, PC-hosted tool set. With this EZ-KIT Lite, users can learn more about Analog Devices' (ADI's) ADSP-21364 hardware and software development and quickly prototype a wide range of applications.

The EZ-KIT Lite includes an ADSP-21364 SHARC Processor desktop evaluation board along with an evaluation suite of the VisualDSP++® development and debugging environment including the C/C++ compiler, assembler, and linker. The evaluation suite of VisualDSP++ is designed to be used with the EZ-KIT Lite only.

An Analog Devices SHARC EZ-Extender™ daughter board (sold separately) can attach to the ADSP-21364 EZ-KIT Lite using the three expansion connectors, allowing a number of Analog Devices High Speed Converter (HSC) evaluation boards to interface with the EZ-KIT Lite.



## CROSSCORE Development Tools

The ADSP-21364 EZ-KIT Lite is a part of the Analog Devices CROSSCORE® Tools product line, which is composed of a comprehensive set of development tools providing engineers with easier and more robust methods for developing and optimizing systems.

### The CROSSCORE components include:

- VisualDSP++ development and debugging environment
- EZ-KIT Lite evaluation kits
- EZ-Extender daughter boards
- Emulators

The easy-to-use VisualDSP++ integrated development environment speeds development, debugging, and deployment while shrinking product development cycles and improving time to market. The EZ-KIT Lite evaluation kits provide an easy way to investigate the performance of Analog Devices' family of embedded processors and DSPs. EZ-Extender daughter boards give developers access and ability to connect various peripherals from Analog Devices and third parties to the expansion interface of the EZ-KIT Lite evaluation kits. Emulators are available for both PCI and USB host platforms for rapid on-chip debugging.

## Embedded Processors and DSPs

Analog Devices is a leading supplier of digital signal processing solutions, from the low power ADSP-21xx DSP families to the high performance Blackfin® Processors, TigerSHARC® Processors, and SHARC® Processors, to integrated mixed-signal DSPs for an increasing spectrum of applications. Our advances in design provide faster processing, more memory, lower power consumption, and simplified system integration. Analog Devices gives you a competitive edge by providing a complete solution including expert technical support, comprehensive development tools, and an independent network of third-party developers called the DSP Collaborative™. For more information about ADI processors and DSPs, visit [www.analog.com/processors](http://www.analog.com/processors).

## CROSSCORE Tools Support

Tel: 1-800-ANALOGD

Email: [dsptools@analog.com](mailto:dsptools@analog.com)

Web: [www.analog.com/processors/tools](http://www.analog.com/processors/tools)

Analog Devices is committed to providing high quality, timely, accurate, and free technical support and software upgrades.

## Ordering Information

Please call Analog Devices CROSSCORE Tools at 603-883-2430 or your local Analog Devices sales representative or distributor for pricing and ordering information for part number: ADDS-21364-EZLITE

## Embedded Processing Support

[www.analog.com/processors](http://www.analog.com/processors)

Email (in the U.S.A.):

[embedded.support@analog.com](mailto:embedded.support@analog.com)

Email (in Europe):

[embedded.europe@analog.com](mailto:embedded.europe@analog.com)

Fax (in the U.S.A.): 781.461.3010

Fax (in Europe): 49.89.76903.157

## Worldwide Headquarters

Analog Devices, Inc.

One Technology Way

P.O. Box 9106

Norwood, MA 02062-9106

U.S.A.

Tel: 781.329.4700

Fax: 781.326.8703

Toll-free: 800.262.5643 (U.S.A. only)

## Analog Devices, Inc. Europe

c/o Analog Devices SA

17-19, rue Georges Besse

Parc de Haute

Technologie d'Antony

F-92182

Antony Cedex, France

Tel: 33.1.46.74.45.00

Fax: 33.1.46.74.45.01

## Japan Headquarters

Analog Devices, Inc.

New Pier Takeshiba

South Tower Building

1-16-1 Kaigan,

Minato-ku, Tokyo

105-6891, Japan

Tel: 813.5402.8210

Fax: 813.5402.1063

## Southeast Asian Headquarters

Analog Devices, Inc.

39/F One Pacific Place

88 Queensway

Admiralty,

Hong Kong, PRC

Tel: 852.2506.9336

Fax: 852.2506.4755



© 2004 Analog Devices, Inc. All rights reserved.  
Trademarks and registered trademarks are the property  
of their respective companies. Printed in the U.S.A.

PH05085-2-9/04



[www.analog.com/processors/tools](http://www.analog.com/processors/tools)